

Parasites

COMMON TYPES OF WORMS IN CATS AND DOGS



Roundworm



Hookworm



Tapeworm



Whipworm

Intestinal Worms

Why are Fecal Samples important? In most cases you will not see worms in your pet's stool unless they have tapeworms. Fecal floats look for not only worms but also eggs and identifies the parasite it came from. Fecal samples should be tested at least once as a kitten/puppy and then annually going forward.

How did my pet get worms? Worms can be picked up commonly from eating infectious eggs or larvae through feces or eating an infected host such as rabbits and mice. You can become infected as well through infected animals and contaminated environments. This is often done through your pet's feces.

What problems can worms cause my pet? In heavy infestations, worms can cause tissue damage through larval migration. They can also cause pets to become anemic and impair the immune system. Common symptoms include diarrhea, vomiting, and coughing.

What to do if my pets have worms? Please call the clinic at 507-332-0716 if you suspect your pet has worms to start a deworming schedule. At home ensure the litterbox is cleaned for cats and that all stool is cleaned out of the yard for dogs promptly.

What prevention is available? We have a variety of topical and oral preventatives available at the clinic.

Cats- NexGard Combo, Revolution Plus

Dogs- HeartGard, NexGard Plus, Revolution



Fleas

Why control Fleas? Flea control is important to the health of your pets. Flea bites can cause discomfort, irritation, and flea bite hypersensitivity. Fleas can quickly infest your home and may even bite humans. When the eggs are laid on your pet, they quickly fall into the environment and carpet is a favored habitat for fleas to mature in. Fleas can also transmit tapeworms.

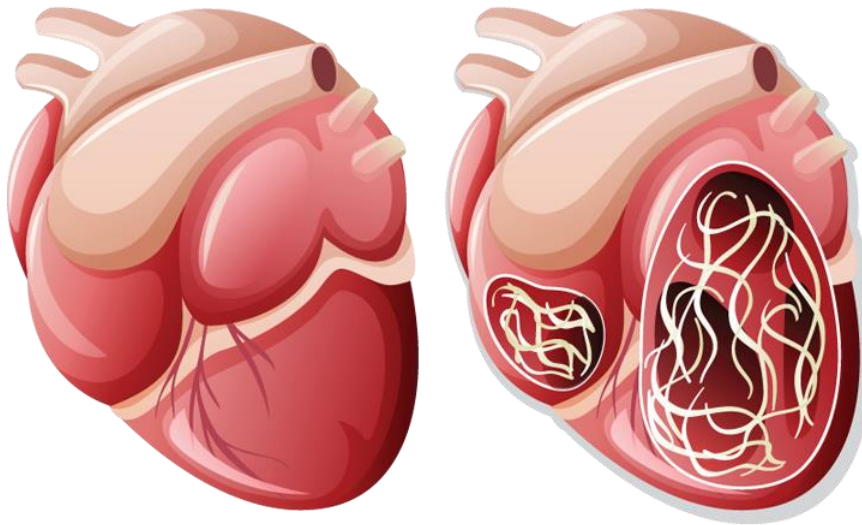
How do you detect fleas? Fleas leave behind flea dirt, dried blood that appears like dirt but turns red when wet on white paper. Flea dirt will be found along your pet's skin. A flea comb can be used to find both flea dirt and live fleas. Fleas are about the size of a gnat and deep brown. Some pets will become very uncomfortable while others may appear unaffected.

How do you clean your home? If you find fleas on your pets, you must clean your home as well to prevent reinfestation. Vacuum frequently, every 2 days, to remove portion of eggs and larvae. Ensure that your vacuum bags are discarded or have flea spray applied. Wash all bedding that your pet goes on and dry in the dryer when possible. There are flea sprays you can get for your house such as Knock-Out.

What prevention is available? We have a variety of topical and oral preventatives available at the clinic.

Cats- Frontline, NexGard Combo, Revolution Plus

Dogs- NexGard, NexGard Plus, Frontline, Revolution



Heartworm

When should my pet be on Heartworm Preventatives? We recommend pets be on heartworm prevention year-round. Mosquitoes can survive the winter inside your home and only one bite can infect your pet. This also helps you remember to stay on schedule without any breaks. Some pets may also travel to warmer climates in the winter where mosquitoes are still present.

My pet is on preventative, do I have to test them? We recommend that all pets be tested yearly. The pet may have vomited the preventative without your knowledge leaving them susceptible. You may also accidentally forget to give your pet their preventative one month.

Is the heartworm test 100% accurate? No routine heartworm tests detect immature or early heartworm infestations. Your pet may have had an undetectable infection that can continue to progress. Preventatives will prevent new infections but cannot prevent progress of pre-existing infections.

What is Heartworm? Heartworm is a parasite spread through mosquito bites. Heartworms can cause lasting damage to the heart, lungs, and arteries in a pet and can create lasting respiratory issues. If an infection occurs a pet should be treated as soon as possible as it can have drastic effects on a pet's quality of life.

What prevention is available? We have a variety of topical and oral preventatives available at the clinic.

Cats- NexGard Combo, Revolution Plus

Dogs- HeartGard, NexGard Plus, Revolution



Ticks

Why do I need to prevent ticks? Ticks are common vectors for disease. This means if a tick bites your pet, they could pass on a disease that can greatly affect your pet's health.

When do my pets need to be on preventatives? Pets should be on preventatives year-round. Any day that the temperature is above freezing, ticks wake up and move around. It is especially important for pets to be on preventatives if they are going to be in tall grass or wooded areas.

What should I do if I find a tick on my pet? If you find a tick on your pet, carefully remove it. Your pet may develop a slight irritation if it were attached. If the tick was able to attach, wait 30 days before performing a tick-borne disease test. All dogs should also be tested annually.

What prevention is available? We have a variety of topical and oral preventatives available at the clinic.

Cats- Frontline, NexGard Combo, Revolution Plus

Dogs- NexGard, NexGard Plus, Frontline, Revolution



